

Boole Server™

The security platform for preventing the loss and theft of sensitive information and confidential files.

Boole Server is the software designed to protect confidential files and allow their immediate and controlled sharing with work groups, staff, and customers, at any time and through any device. The files archived and transferred with Boole Server are protected against all attempted thefts or unauthorized accesses; only authorized users can access, use, view, or edit the files they have received in sharing.

Boole Server is the comprehensive protection system to avoid the unapproved use of confidential files by unauthorized staff, suppliers, and users.



Nowadays, it is easier than ever to lose control of confidential documents which, **without protection, can be printed, copied or forwarded to competitors or press offices.**

Do not forget that employees may keep and use company documents even when they no longer work with their employer. Thanks to Boole Server, all documents and data are protected and controlled at any time.

Boole Server offers:

- **Protection** of confidential company files
- Immediate and controlled **sharing** of data with work groups, staff or customers, even via e-mail
- Absolute **integrability** with the most widely used applications (e.g. Microsoft Office, Microsoft® Outlook, Microsoft® Sharepoint)
- Constant **monitoring** of all access and uses on encrypted files
- **Flexibility** to suit the most diverse needs, both of professional firms and multinationals with complex structure. Boole Server can be applied to countless use fields.
- **Compatibility** with all devices (tablets, smartphones, laptops) to allow secured sharing of files, also in mobility.

The 5 guaranties

THE 5 GUARANTEES THAT ONLY BOOLE SERVER CAN PROVIDE



ABSOLUTE PROTECTION

Going beyond the traditional perimeter security systems and centralized data protection, to ensure the highest security level.



CONTINUOUS ENCRYPTION

Persistent protection also while reading and editing the files previously encrypted with Boole Server.



ALWAYS ACCESSIBLE DATA

Possibility to access protected data, everywhere and at any time, also through mobile devices.



CONSTANT CONTROL

A state-of-the-art auditing system constantly tracks the activities performed on every file by each single user.



SECURE SHARING

Differentiated access rights to carefully decide which activities every user can or cannot perform on every protected file.



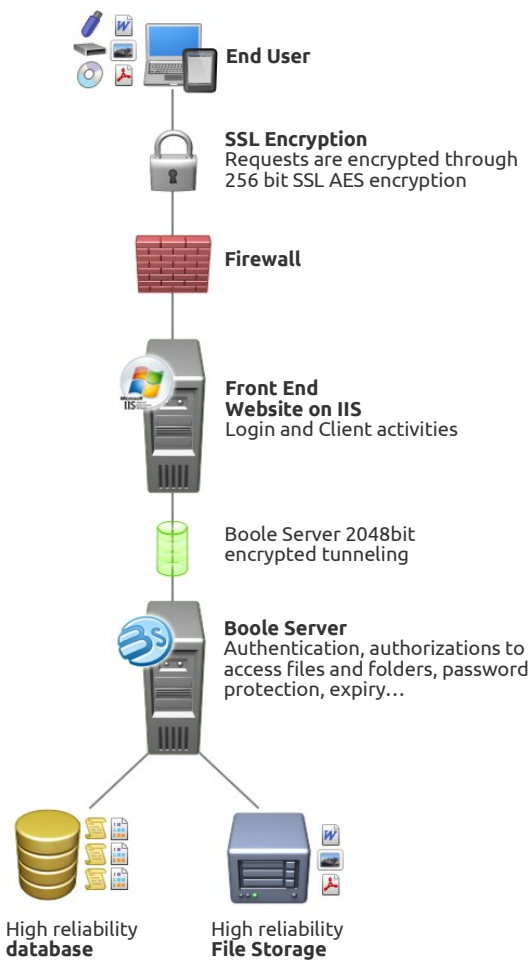
The theft and unauthorized use of information, either confidential or strategic, currently represent possibilities one has to consider carefully and know how to tackle.

Surveys carried out at an international level show that only organizations and companies which have suffered from data thefts or leaks are the most inclined to implement comprehensive **security policies** (IT platforms, technologies, staff training); while all other companies consider themselves as immune from this problem.

The concept of perimeter security (firewalls, antivirus software, etc.) is limited and obsolete since **improper data use and breaches** statistically **occur within the company**: therefore, what needs to be protected is the very content of confidential documents.

How it works

Boole Server architecture is designed to encrypt digital documents, while allowing their secured and controlled sharing with work groups, staff, and external customers.



» SERVER

The **Server** where Boole Server is installed on is the core of the whole system for company file protection. Just like the mind governing and controlling a sophisticated system, within the Boole Server architecture the server is responsible for all operations

Ensuring the protection and encryption of data, information related to profiles and relevant authorizations to access and use every single file.

Processing such data allows Boole Server-based solutions to focus on:

- the creation of **centralized policies** to ensure that operational activities comply with the security standards set by the company
- the advanced **management of groups**
- the **synchronization** with Microsoft® Active Directory
- the **high reliability** configuration
- the **distinction** between system administrator profiles and data managers.

» WEB CLIENT



The **Web Client** is the tool through which users can connect to Boole Server from any Internet browser, and exploit functionalities, such as:

- **Download/Upload** of files and folders from their own space in Boole Server, to encrypt and/or secure their documents.
- protected **centralization** of files and folders
- **file sharing** in a selective, granular, and temporary manner
- creation and control of **access profiles**
- **monitoring** of all activities performed by users on protected files
- **sending messages** in encrypted mode
- **viewing files in protected mode**
- **encryption of texts and files**
- **editing of online files** with no need to download them.

» AGENT

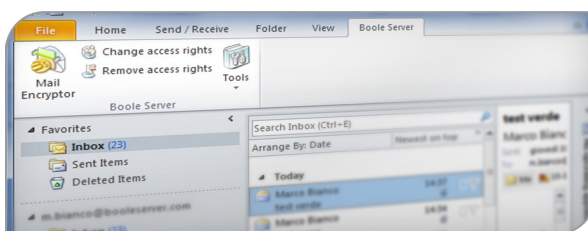
The Boole Server **Agent** has been conceived to meet the needs for highest data protection, while ensuring further **control and protection** features to be added to those included in the Web Application.

Through the Agent, Boole Server users can:

- benefit from the **Top Secret functionalities** to block unauthorized activities, such as the screen capture, and to prevent screen copying of shared documents in view-only mode
- work on files in **protected mode**
- **encrypt files and texts** in local
- **create archives** of files encrypted in local
- **synchronize local folders** with centralized resources, to create their own **protected Cloud**, accessible from any type of device
- **generate certificates** to allow access to encrypted documents also in offline mode.

MAIL ENCRYPTOR

Thanks to the dedicated plug-in, it is possible to integrate Boole Server protection mechanisms within **Microsoft® Outlook** for a complete fusion with the most widely used e-mail client included in the



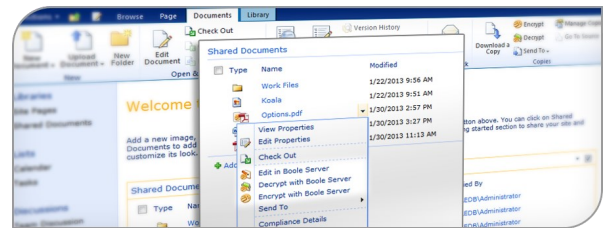
Microsoft® Office suite.

Thanks to the Boole Server plug-in, it is possible to send and receive encrypted e-mails in the most secured and easy way, directly through the Outlook interface.

The possibility to set automatic protection rules allows, for instance, that e-mail messages are automatically encrypted every time the system detects a given word or data previously marked as "sensitive", or when a specific e-mail address is detected among the senders or recipients.

SHAREPOINT CONNECTOR

All Microsoft® Sharepoint users are offered a dedicated plug-in through which to use all Boole Server data protection functionalities directly on the resources managed by the centralized system.



A further guarantee of protection, to encrypt and secure confidential data stored in the Sharepoint database. The usability of Sharepoint and the protection of Boole Server are now offered together.

APP FOR SMARTPHONES AND TABLETS

Boole Server is available for free in mobile version for iOS and Android platforms. The relevant official Apps allow to access protected company data through latest



generation mobile devices (iPad, iPhone, Android).

The Apps ensure the possibility to exploit the functionalities offered by Boole Server in order to read, work on, and share files in a secured and controlled way, even in mobility. Everywhere and on any type of device.

SDK

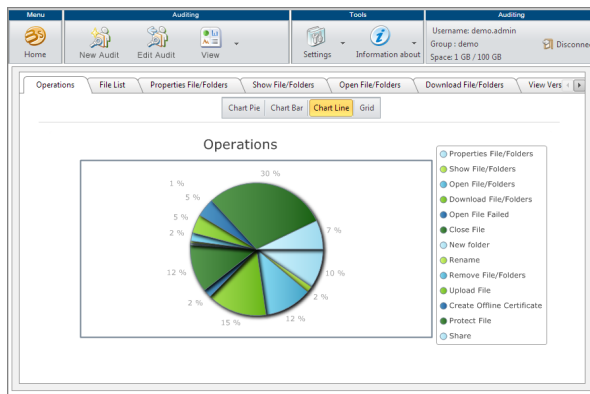
Boole Server offers developers and programmers its SDK Software Development Kit, which allows to interface with Boole Server through integrations into third-party applications by using Visual Studio .NET 3.5 version or higher.

Thanks to Boole Server SDK, it is possible to develop integrations with any software to which to apply Boole Server protections and IT security settings. In a totally transparent way for end-users, who will not have to change their work procedures.

AUDITING

Boole Server allows to search for every activity performed by users within the protected network managed by the system.

By selecting a time interval and the type of activity one wishes to audit, it is possible to view detailed search results displayed in tables or graphs.



The possibility to select additional search parameters allows for precise and complete in-depth searches.

Encryption System

Boole Server protects files, e-mails, and texts through 2048 bit encryption key, based on symmetric algorithm.

Not to jeopardize the confidentiality of the information contained in the encrypted resources, **Boole Server stores the decryption keys centrally, rather than in the file itself**: one can be sure that the file cannot be decrypted without the authorized connection to the server.

If compared to the other Encryption suites, Boole Server is **the only software which keeps files encrypted even when they are used**: unlike all the other encryption systems, whose protection disappears the very moment when the file is decrypted and made viewable, **Boole Server offers a persistent protection even while working on the encrypted files**.

System Requirements

Boole Server can be installed on operating systems Microsoft Windows Server 2008R2/2012, even virtualized.

For the correct functioning of Boole Server, Microsoft DotNet Framework 4.0 and MS SQL Server database (2008R2 or 2012) are required.

FILE FORMATS



List of the main certified files on which Boole Server advanced protections can be applied:

.avi	.gif	.mp4v	.ppt	.txt
.bmp	.jpg	.mpeg	.pptx	.wav
.con	.jpeg	.mpg	.rtf	.wma
.doc	.mkv	.pdf	.swf	.wmv
.docx	.mov	.png	.tga	.xls
.dwg	.mp3	.pps	.tif	.xlsx
.flv	.mp4	.ppsx	.tiff	